

# Instructions for the installation of a virtual appliance



## Table of content

1. Reasons for choosing a Virtual Appliance (VA) .....	2
2. Supported VMware products .....	2
3. Variants of the REDDOXX virtual appliance (VA).....	2
4. Basic settings of a new virtual machine .....	3
5. Step by Step installation of a virtual appliance (VA) .....	4
5.1. Setup of a Virtual Appliance as an example on the VMware Server .....	4
5.2. Primary settings of the new virtual machine.....	5
5.3. Installation process of the VA.....	12
6. Implementing and configuring the VA.....	15

## 1. Reasons for choosing a Virtual Appliance (VA)

When using a virtual appliance you can determine which hardware you want to use for it. Therefore highest demand on reliability, system stability and performance can be satisfied.

Following advantages resolves when using a virtual appliance instead of a hardware based appliance:

- Scalability in Disk Storage, CPU and RAM
- Flexible ressource management
- Higher performance of disk I/O by using a SAN backend
- Additional system failure security by using cluster technology from VMware
- Better handling of the remote administration via VMware
- Consolidation benefits of already payed VMware hardware

## 2. Supported VMware products

- VMware ESX Server (for 1026 ab v. 3.0.3)
- VMware Server (from v. 2.0)
- VMware Workstation (from 5.x)
- VMware Player

## 3. Variants of the REDDOXX virtual appliance (VA)

Variant	RAM	Processor
BASIC	256 MB	1
ENTRY	512 MB	1
SMB	1024 MB	1
MEDIUM	2048 MB	1

## 4. Basic settings of a new virtual machine

The following information must be respected to create a new virtual machine.

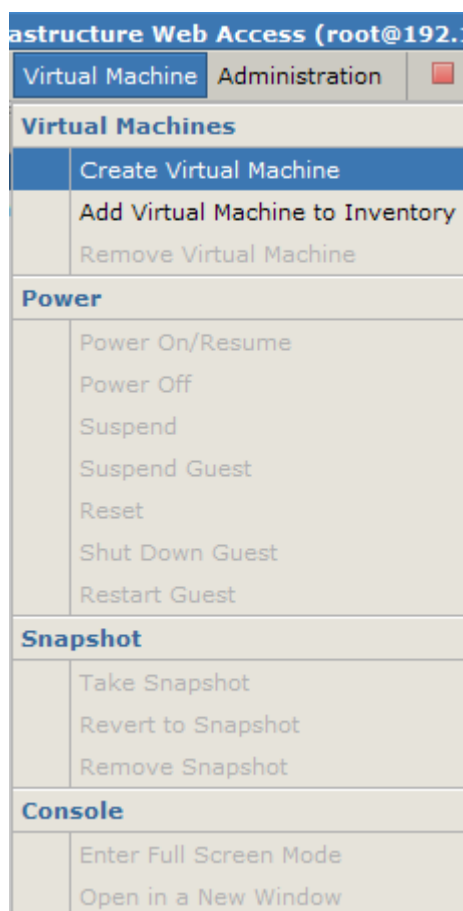
Hardware	Settings
Operating system	Linux Ubuntu
Harddisk	SCSI min 40 GB *
SCSI Controller Type	BusLogic oder LSI Logic (LSI Logic Recommended with ESX)
RAM	256 (for basic)
Network	bridged
Processor	1
CDROM	only required for installation

**\*) Please consider when determining the disk space if you will use the MSX-Agent. During archiving the mails from the MS Exchange server gets stored locally before they will be transferred finally to the archive onto the remote share.**

## 5. Step by Step installation of a virtual appliance (VA)

### 5.1. Setup of a Virtual Appliance as an example on the VMware Server

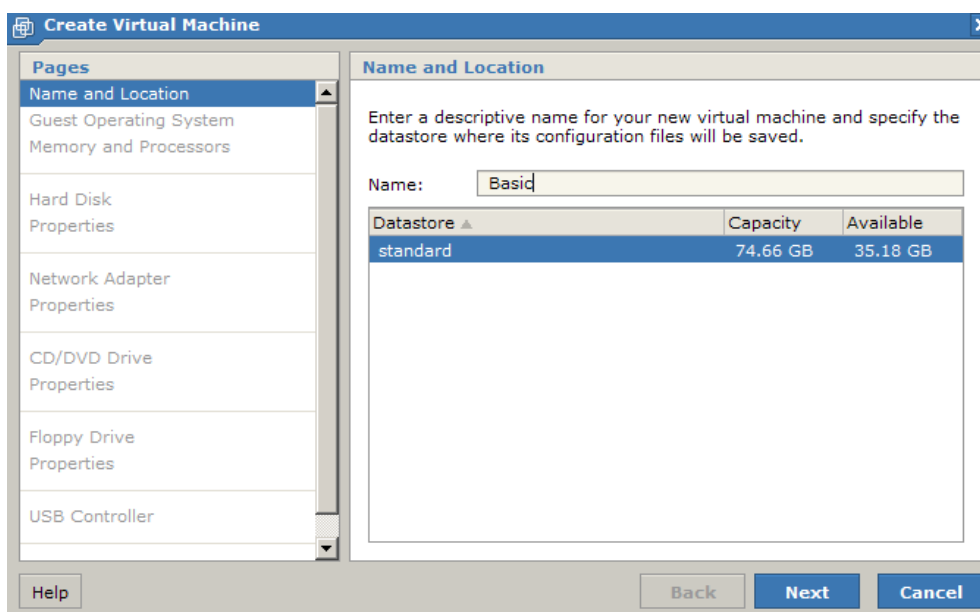
Create a new virtual machine.



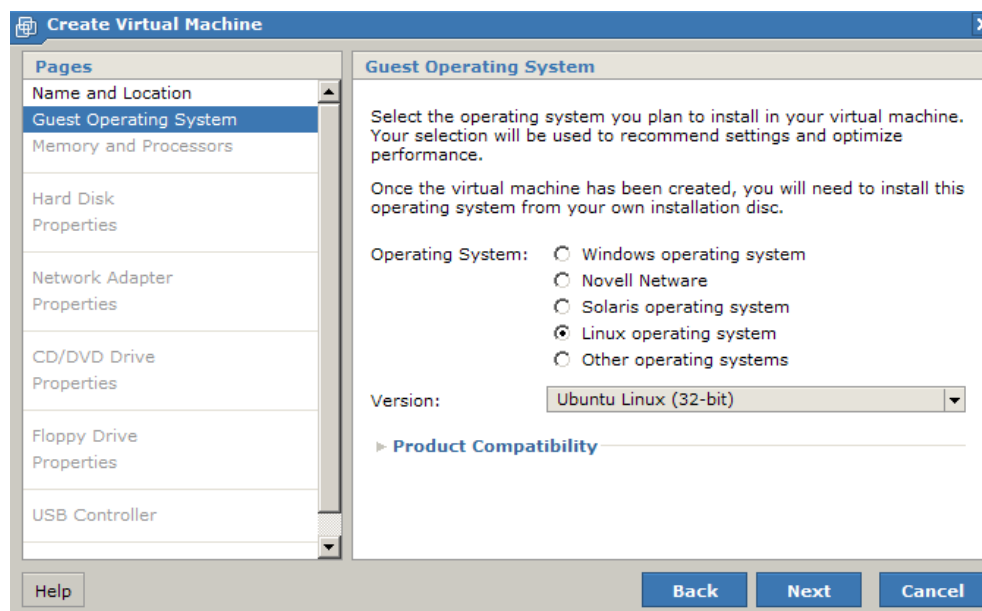
## 5.2. Primary settings of the new virtual machine.

Follow the parameter settings of the different appliance versions.

1. At first a name and a storage location must be specified for the new virtual machine.

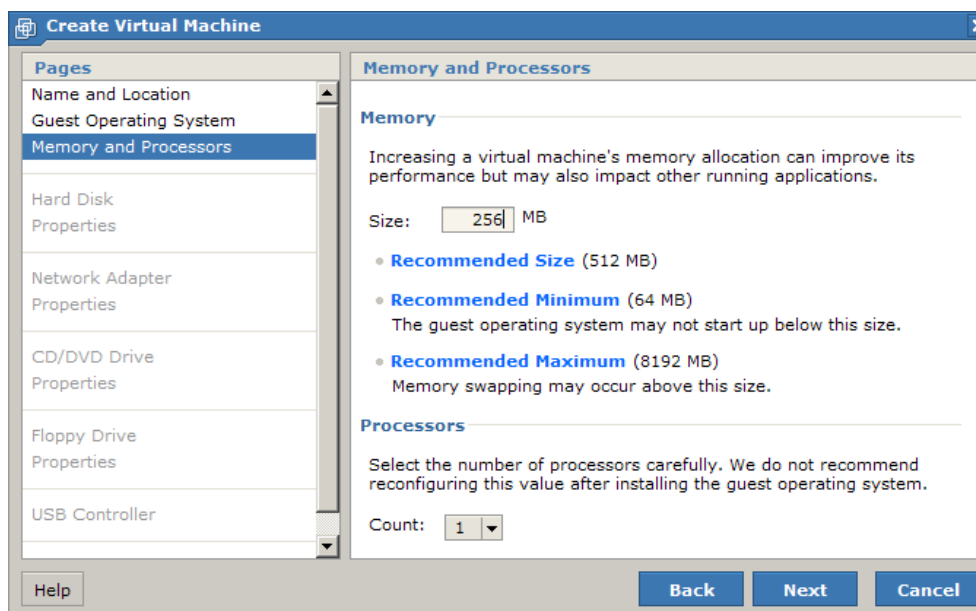


2. Choose the operating system which should be installed.

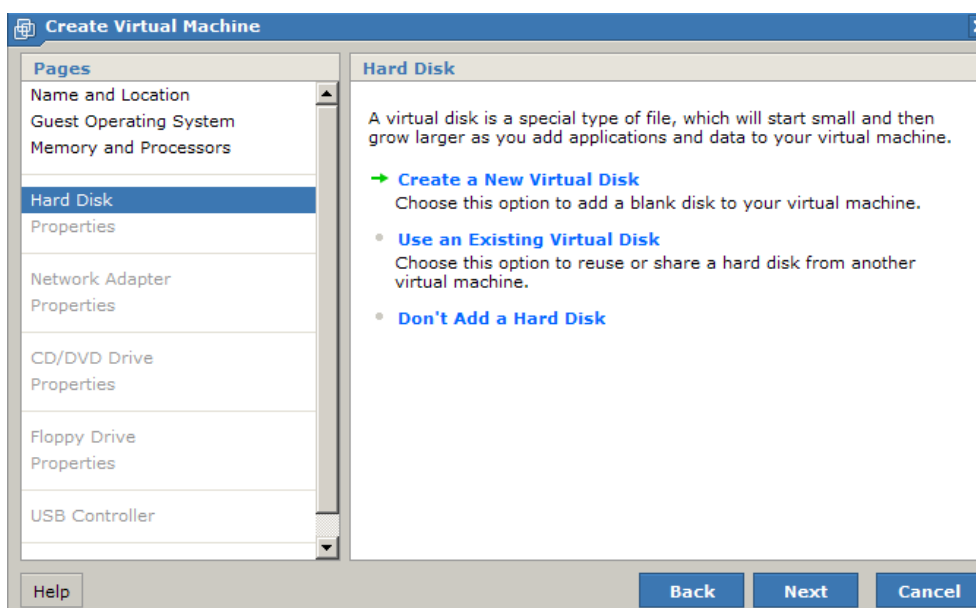


3. Choose how much RAM will be needed.
4. Further choose the count of processors.

Follow the parameter settings of the different appliance versions in relation of the RAM size!

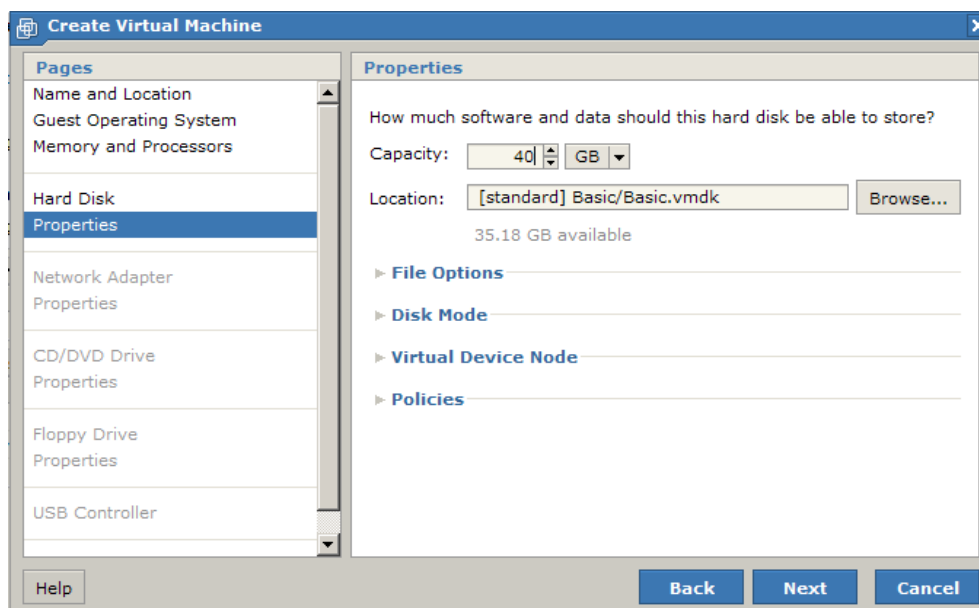


5. Choose „Create a New Virtual Disk“!



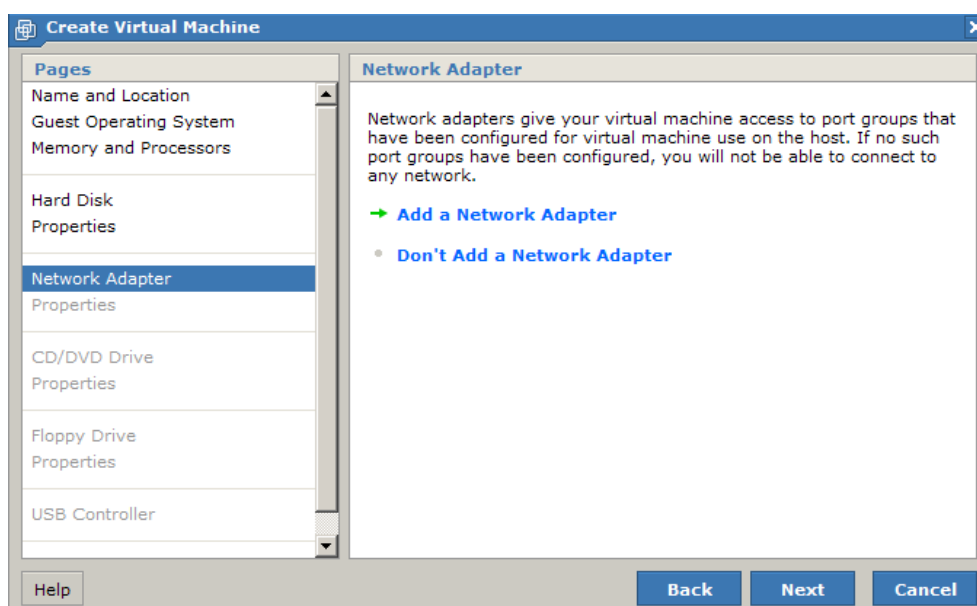
6. Choose the capacity of the virtual disk.

Follow the parameter settings of the different appliance versions in relation of the disk capacity!

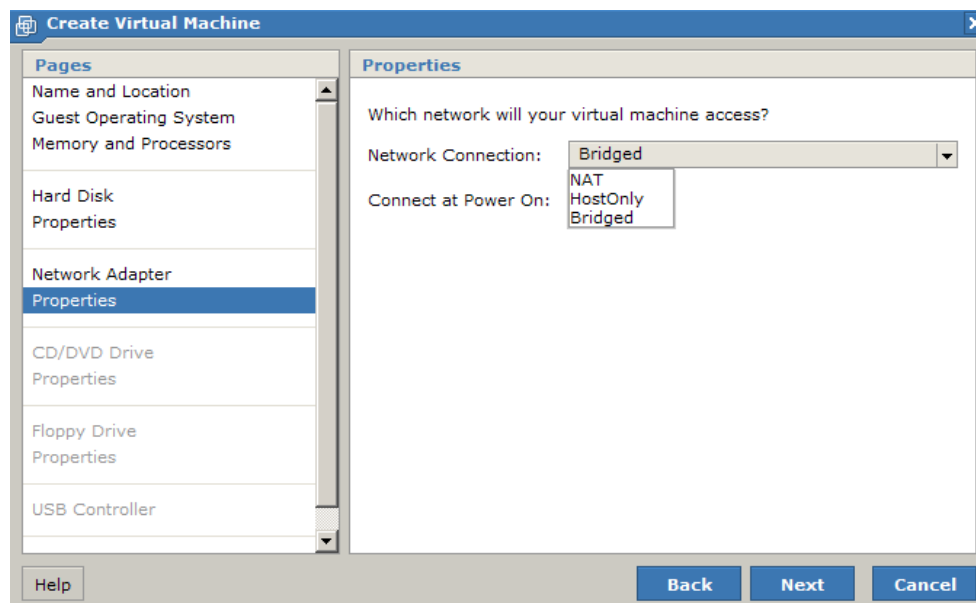


7. Add a network adapter.

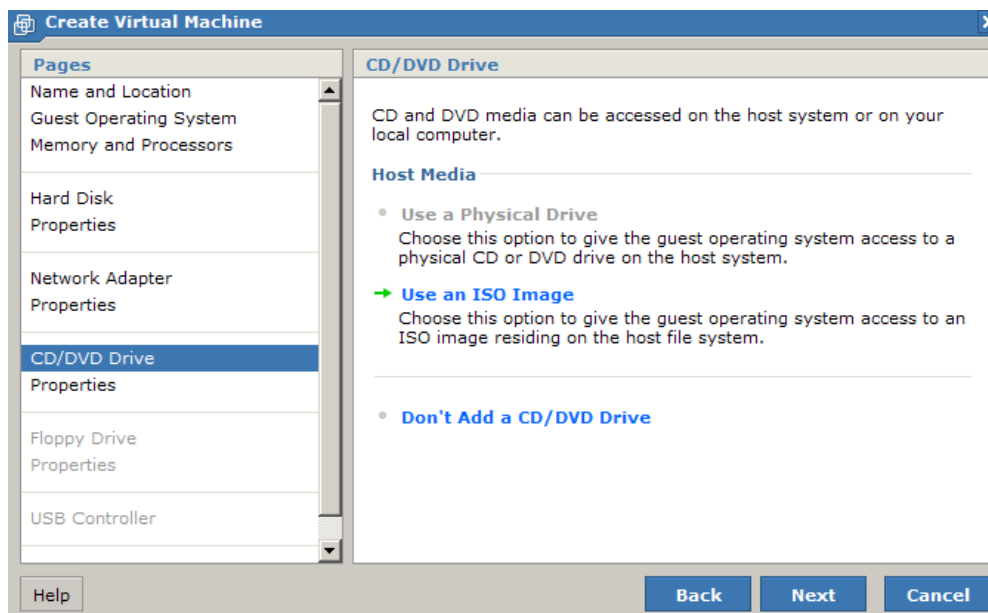
A network adapter is absolutely required, because the VA must be registered on the Reddoxx portal to ensure functionality.



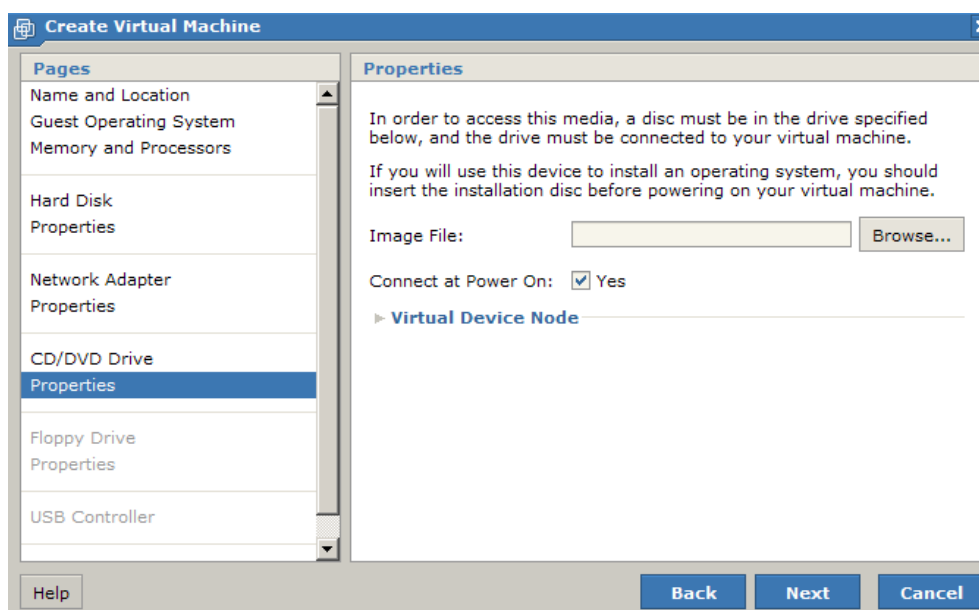
8. Choose the network connection „Bridged“.



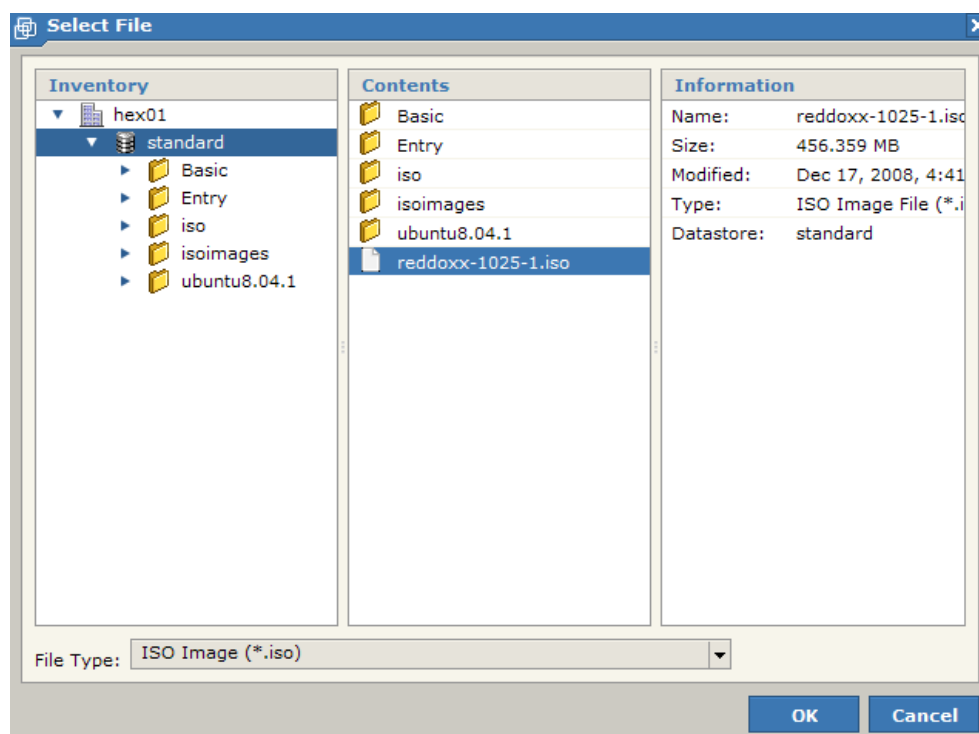
9. Choose a media for installation process.



10. In the displayed example an ISO-image will be used for installation source.  
Alternative an image file on cdrom can be used.



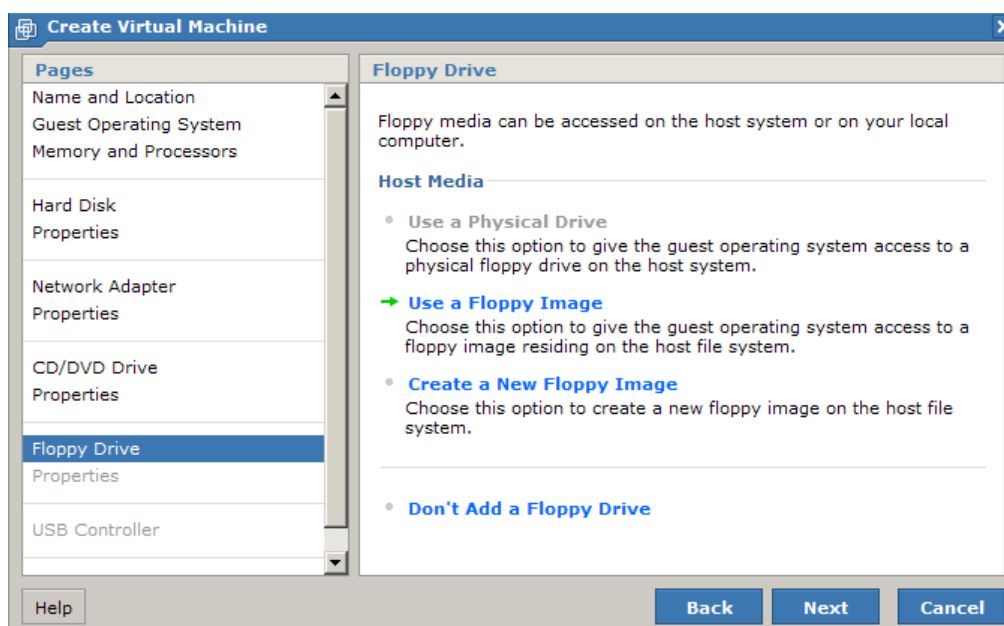
11. Choose the path where the ISO-image is.



12. At the next step a floppy drive can be implemented.

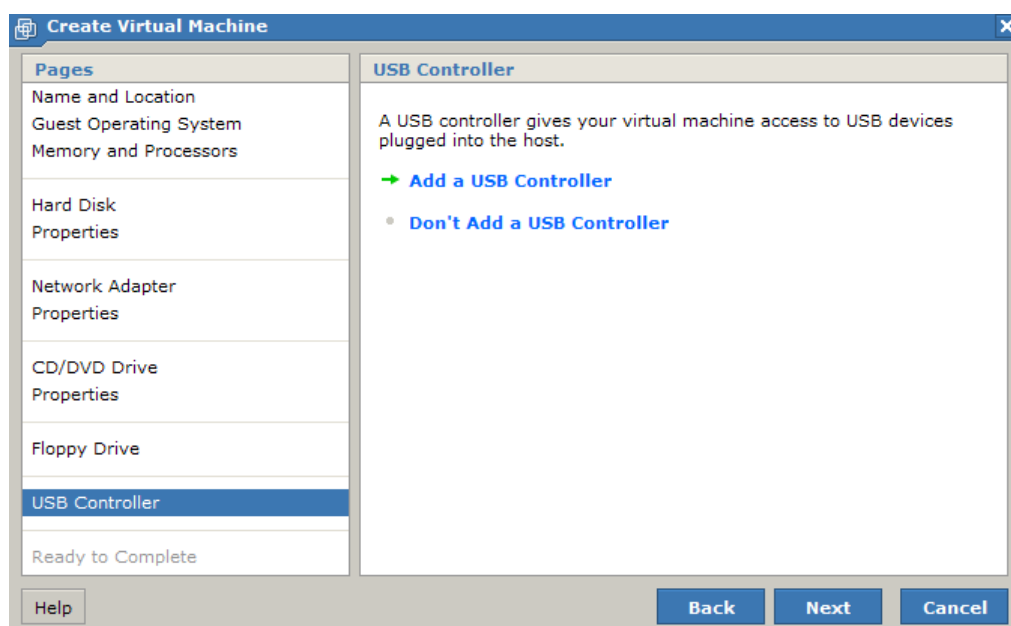
**That's not necessary.**

Choose „Don't Add a Floppy Drive“!

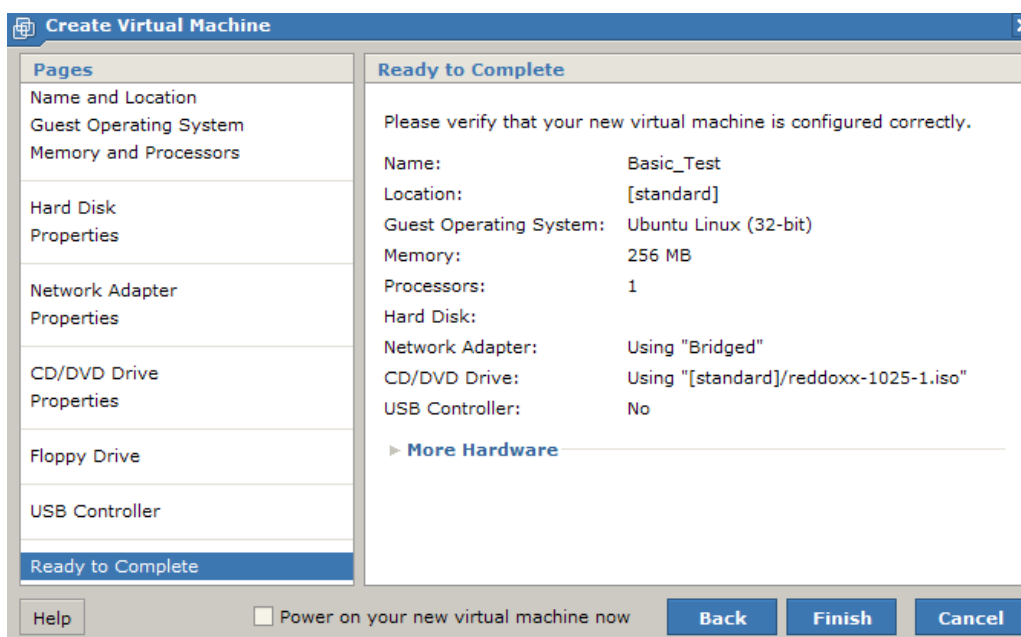


13. Also an USB-Controller can be implemented. That's not necessary, too.

Choose „Don't Add a USB Controller“!



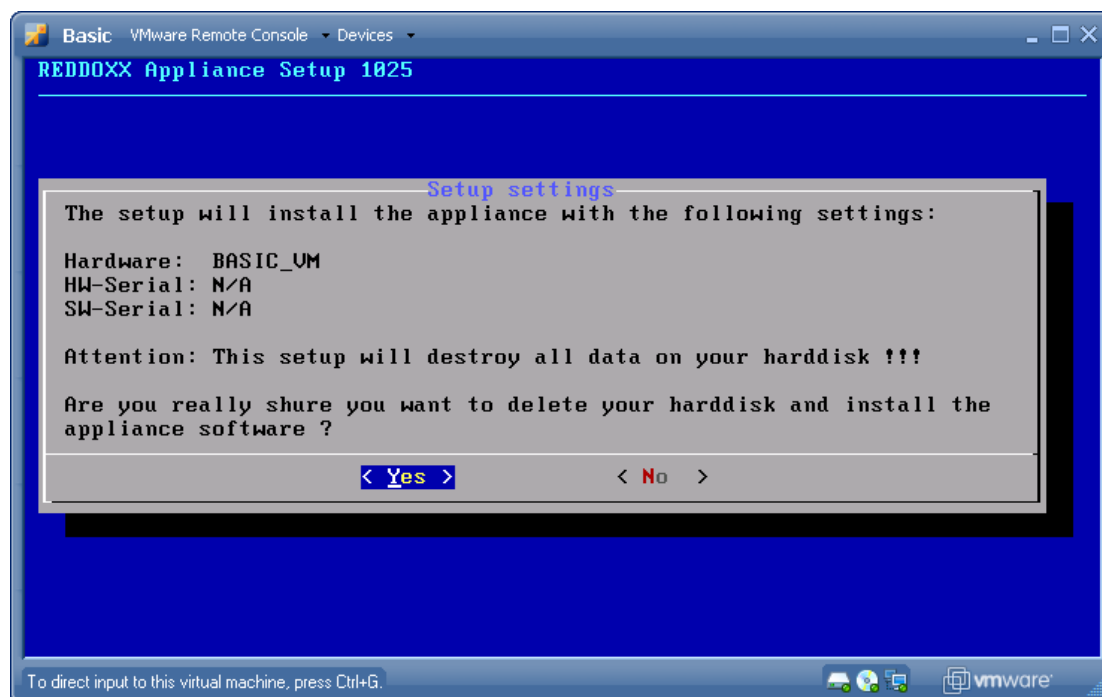
14. Now the basic settings are done. Klick “Finish” to start the installation.



### 5.3. Installation process of the VA.

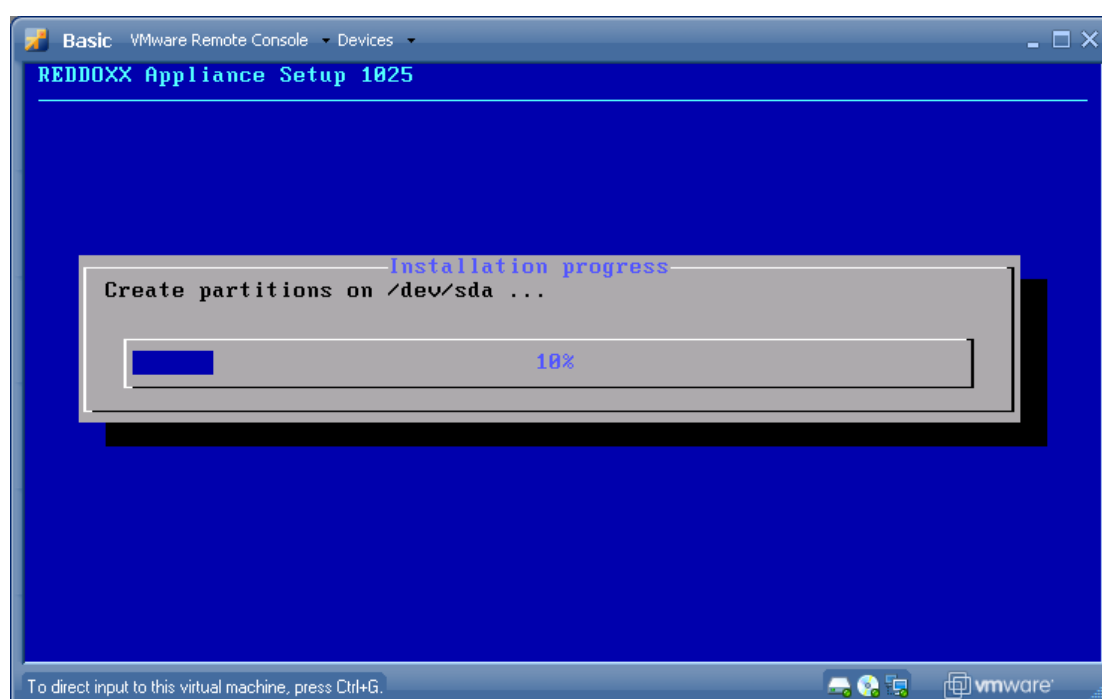
1. At the first dialog the recognized hardware type will be displayed.

*This detection is done automatically and dependent on the RAM settings in chapter 2.*

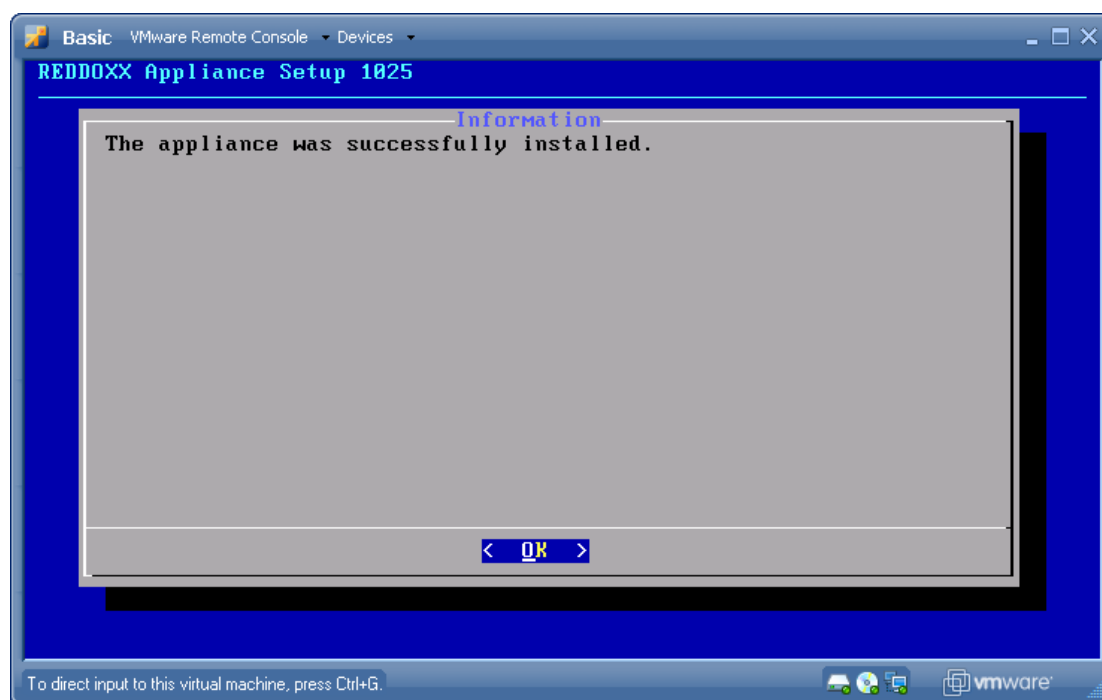


2. At the first step the partitions will be created and the appliance operating system data will be copied.

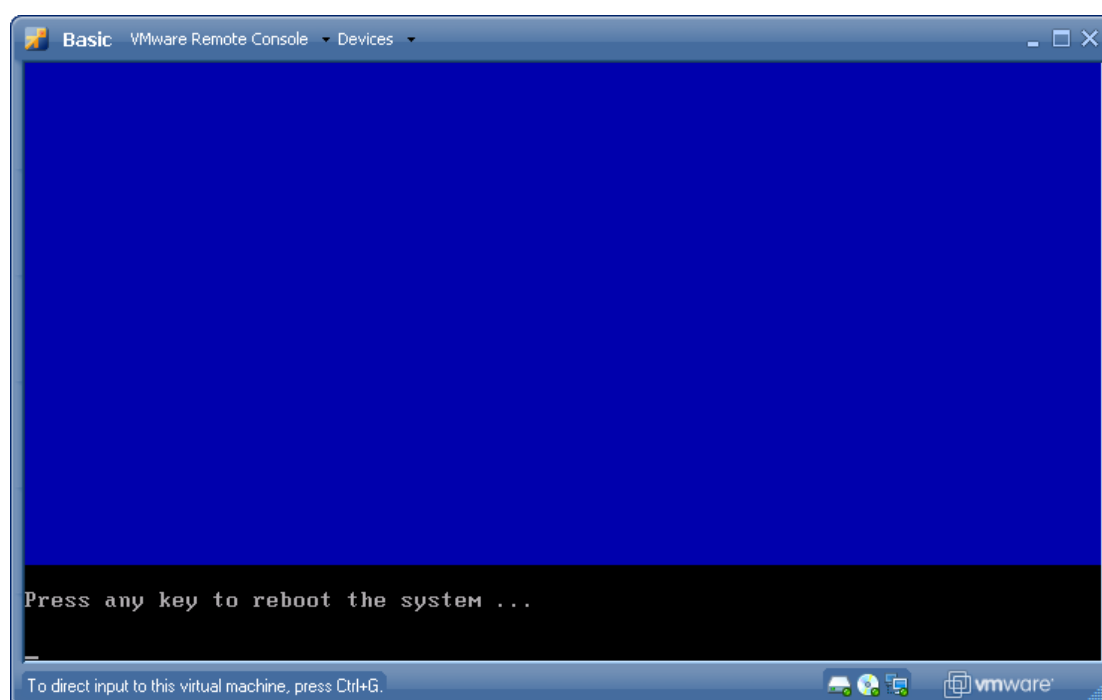
*It's important, that the disk size was chosen with enough space.*



3. The installation is finished and the VA must be rebooted.



4. Press the “OK” button and then any key to reboot the system.

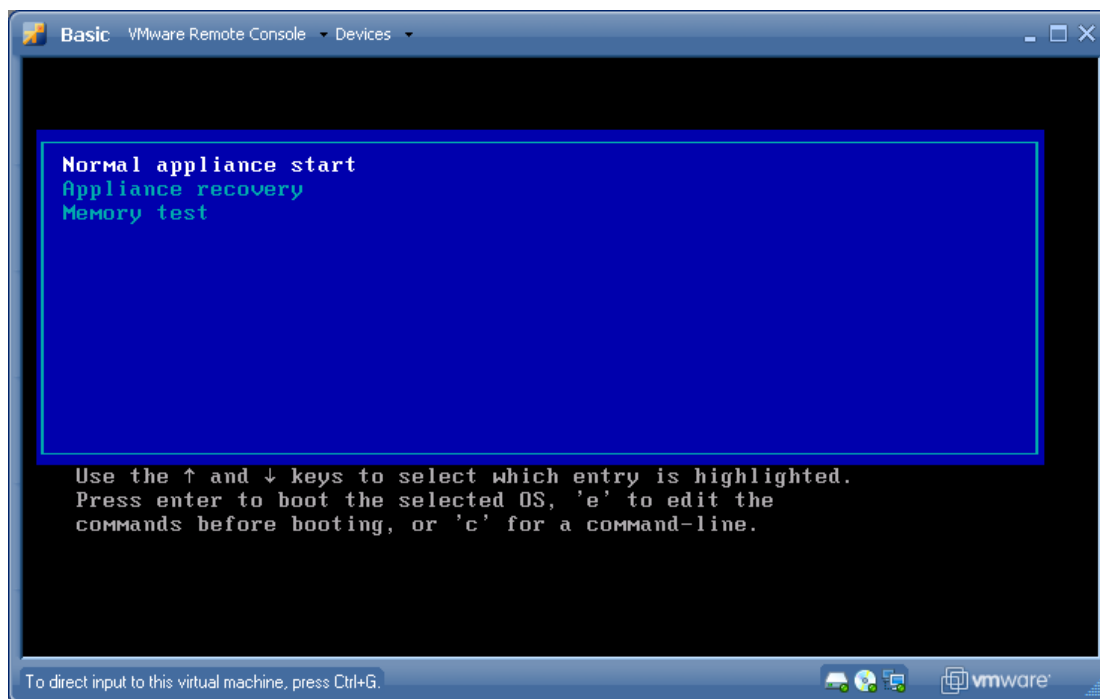




REDDOXX

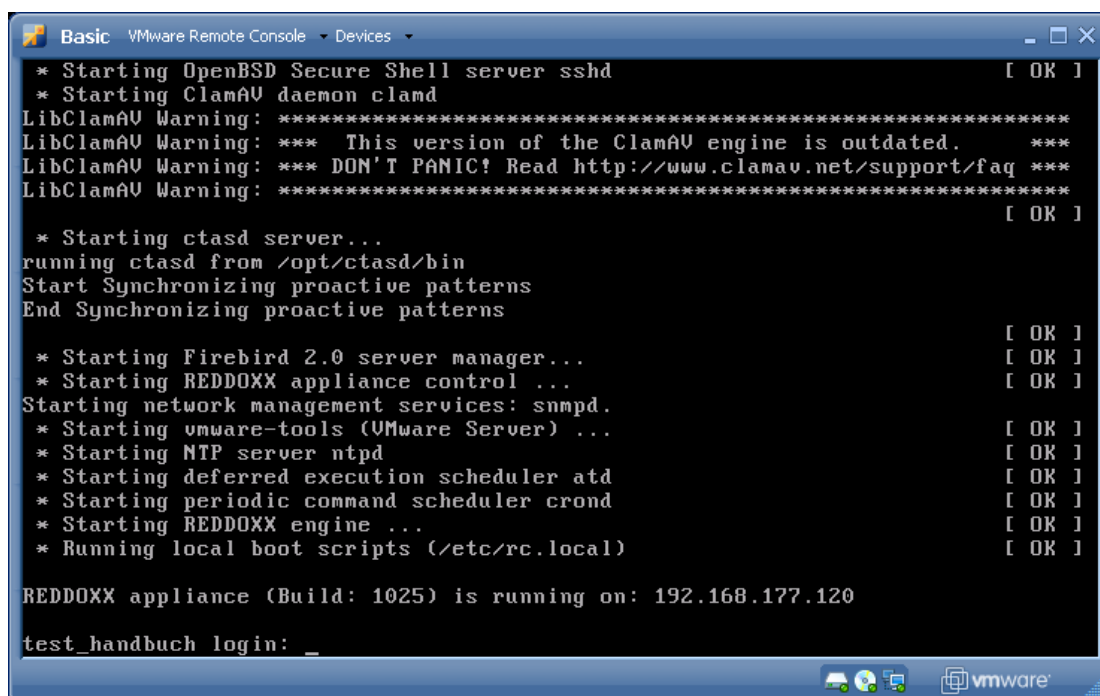
5. After the reboot the boot loader will be displayed the first time. Select „Normal appliance start“.

*If necessary to recover the system, please choose „Appliance recovery“. Only on this parameter, it's possible, to start a recovery.*



6. If the start up is finished, it's possible to log on to the system.

Login : **admin**  
Password : **AppAdmin**



## 6. Implementing and configuring the VA

This step is the same as the start up of a hardware appliance. At the following link you will find the quick guide for further help:

[http://downloads.reddox.net/docs/REDDOXX%20Quick%20guide\\_en.pdf](http://downloads.reddox.net/docs/REDDOXX%20Quick%20guide_en.pdf)

More detailed information is described in the admin user manual:

<http://support.reddox.net/manuals.php>