

---

# Quick guide for the REDDOXX POP3 and bridge configuration

## Content

<b>1</b>	<b>Operating modes</b>	<b>1</b>
1.1	Standard mode	1
1.1.1	Configuration for receiving e-mails via POP3	1
1.1.2	Configuration for sending e-mails via SMTP	3
1.2	Bridge mode	4
1.2.1	Configuration and activation of the bridge mode	4
1.2.2	Connecting the appliance for using the bridge mode	5
1.2.3	Bridge policies	6
<b>2</b>	<b>Managing users</b>	<b>7</b>
2.1	Logging on to the user console	7
2.2	Message queues	8

## 1 Operating modes

The REDDOXX appliance can be used in two different operating modes as of build 1024 – in standard mode and bridge mode.

### 1.1 Standard mode

In standard mode the REDDOXX appliance is connected via a LAN interface (LAN-1).

#### 1.1.1 Configuration for receiving e-mails via POP3

Please configure the login information to your POP3 mailbox in your mail client as follows. Please keep in mind that the form of your account name has to be modified.

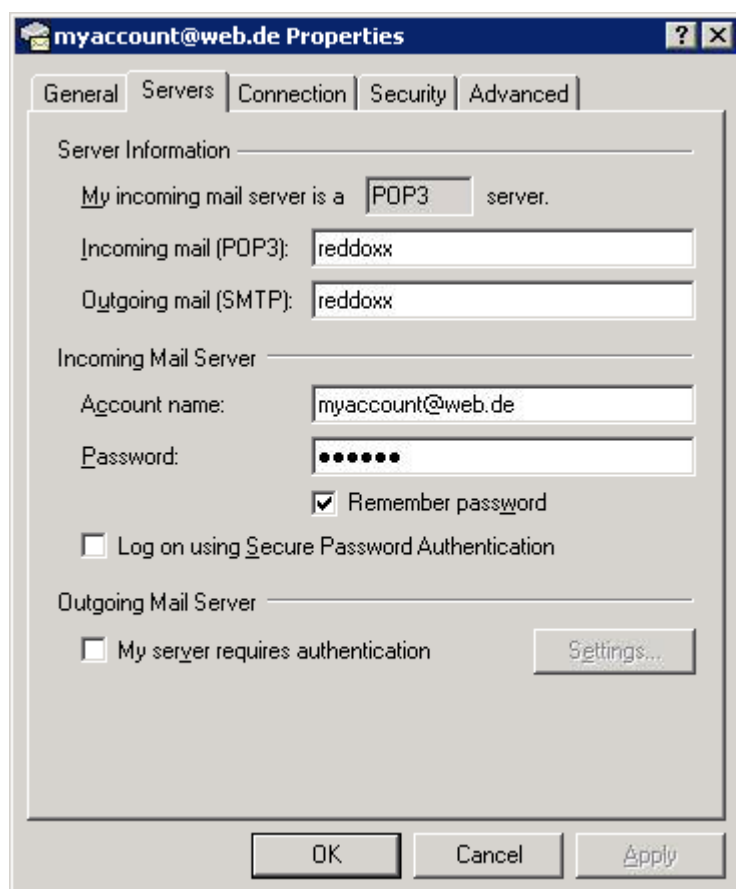


Image: Configuration of an email client for using POP3 via the REDDOXX appliance.

inbox/ : Host name or IP address of your REDDOXX appliance.  
outbox

Account name : The account name is made up of the actual login name plus the host name of your provider's POP3 server.

**Example:**

Your e-mail address is: [myaccount@web.de](mailto:myaccount@web.de)

The according login is: myaccount

POP3 server is: pop3.web.de

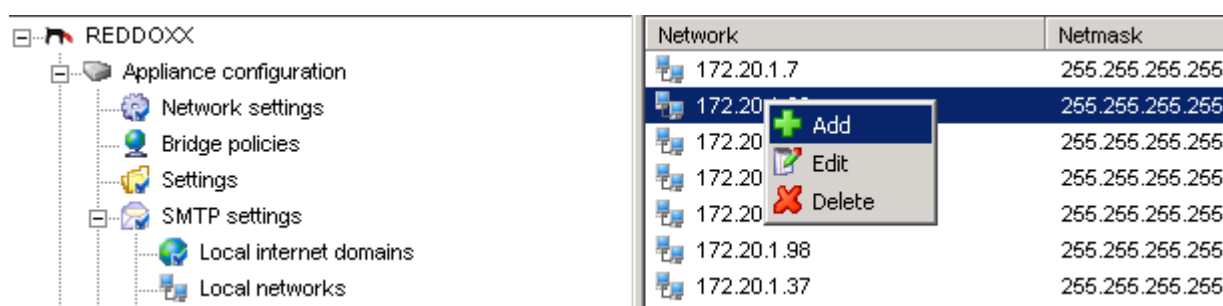
This is the new account name that results from the information given above:  
[myaccount@pop3.web.de](mailto:myaccount@pop3.web.de)

Please use this compound account name for logging on to your REDDOXX appliance via POP3.

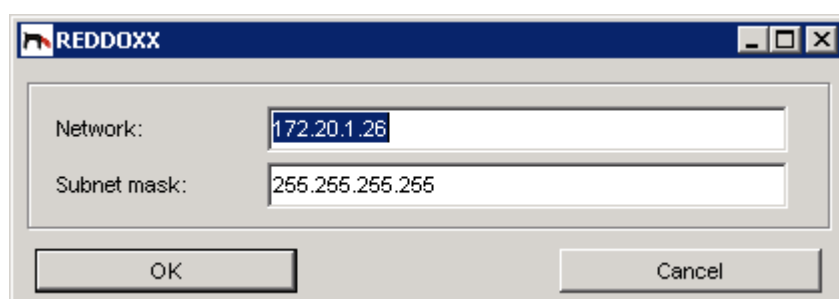
## 1.1.2 Configuration for sending e-mails via SMTP

### Authorisation for sending e-mails

In order to send e-mails it is necessary to have the sending stations on the REDDOXX appliance activated. You can configure this in *SMTP preferences – local networks*.



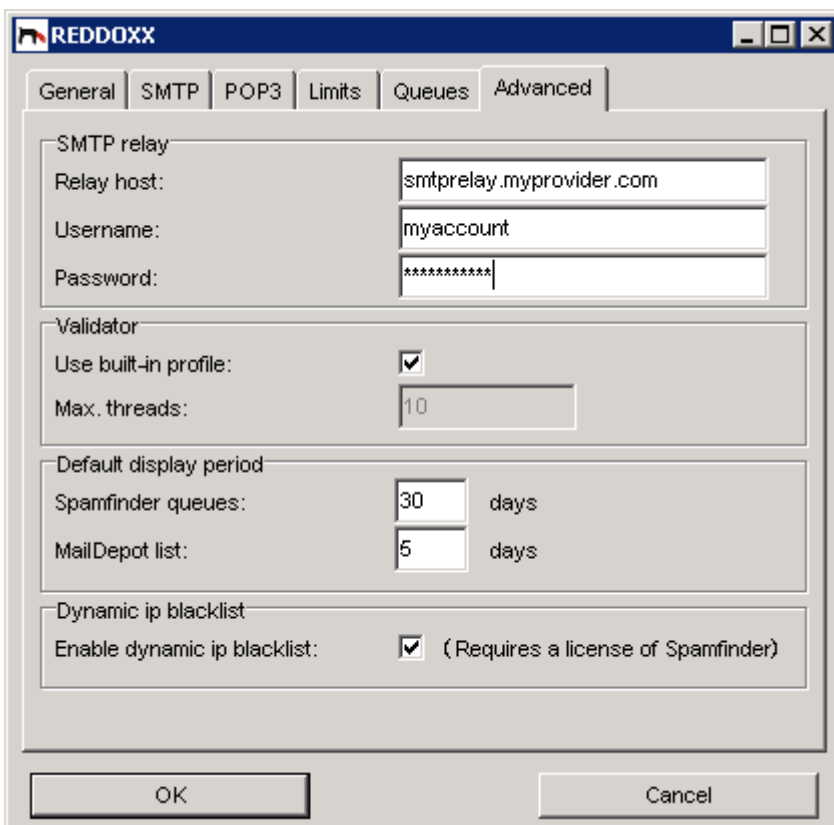
Add the network that you want to allow for sending e-mails via SMTP on the REDDOXX appliance. Specify separate stations (IP addresses) in the subnet mask field by typing in 255.255.255.255



Please restart the service 'SMTP server' then.

## Sending e-mails via a relay

If you do not use a static IP address, REDDOXX is forced to send e-mails to the internet via a mail relay. Please type in the relay information that you obtained from your internet provider in *PREFERENCES* according to the following image.



The screenshot shows the REDDOXX configuration window with the 'Advanced' tab selected. The 'SMTP relay' section contains the following fields:

- Relay host:
- Username:
- Password:

The 'Validator' section contains:

- Use built-in profile:
- Max. threads:

The 'Default display period' section contains:

- Spamfinder queues:  days
- MailDepot list:  days

The 'Dynamic ip blacklist' section contains:

- Enable dynamic ip blacklist:  (Requires a license of Spamfinder)

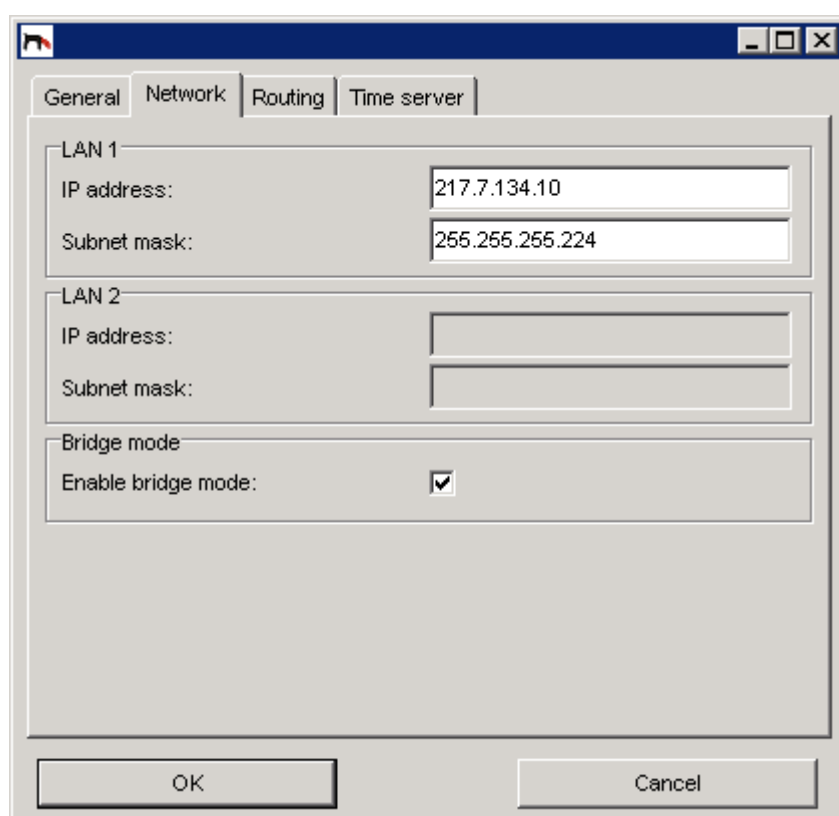
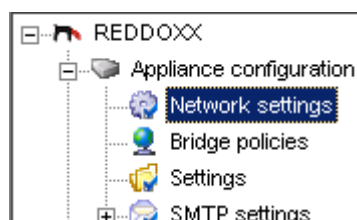
At the bottom of the window are 'OK' and 'Cancel' buttons.

## 1.2 Bridge mode

The advantage of using the bridge mode is that there is no need to adjust your existing infrastructure in order to both retrieve your e-mails via POP3 and send them via SMTP.

### 1.2.1 Configuration and activation of the bridge mode

Please connect your appliance via the LAN-1 interface according to the information given in standard mode, first. Connect to the admin console on your appliance and activate the bridge mode in *network preferences*.



The REDDOXX appliance has to be restarted then.

When operating in bridge mode the TCP connections of the ports for SMTP (25), POP3 (110) and POP3s (995) are being intercepted and processed by the REDDOXX appliance. All other protocols will be routed in the original way.

## 1.2.2 Connecting the appliance for using the bridge mode

In bridge mode the appliance is set up physically between the internet gateway (firewall/router) and the subsequent switch. You connect the gateway with the LAN port 1 and the subsequent LAN (switch) with the LAN port 2. Please keep in mind that the internet connection will be lost for a short time during the physical connection process.

The entire internet traffic will be processed by the appliance now.

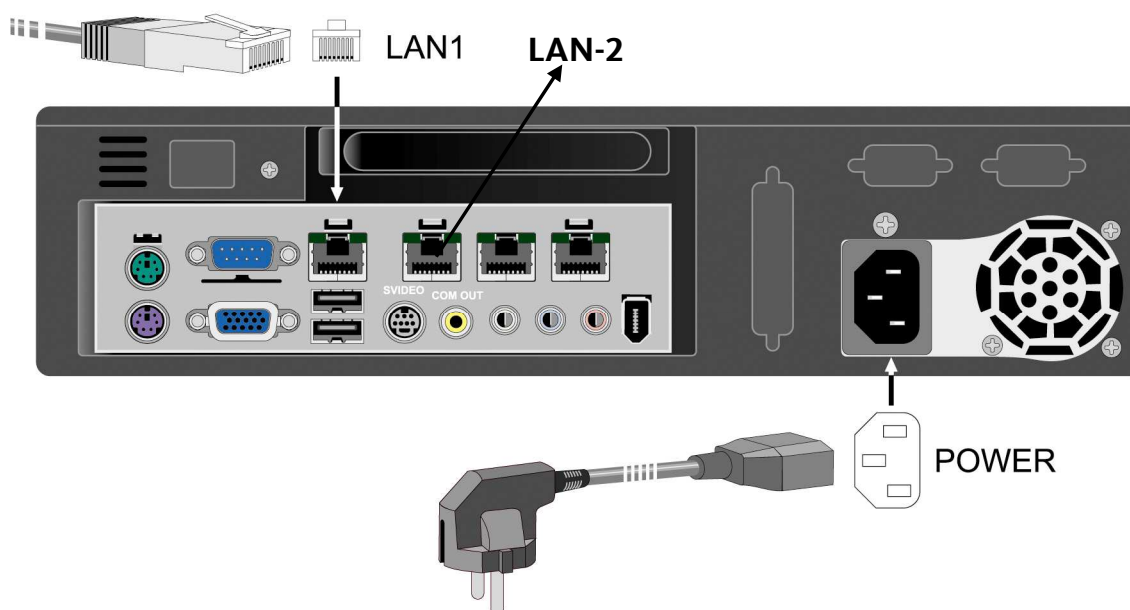
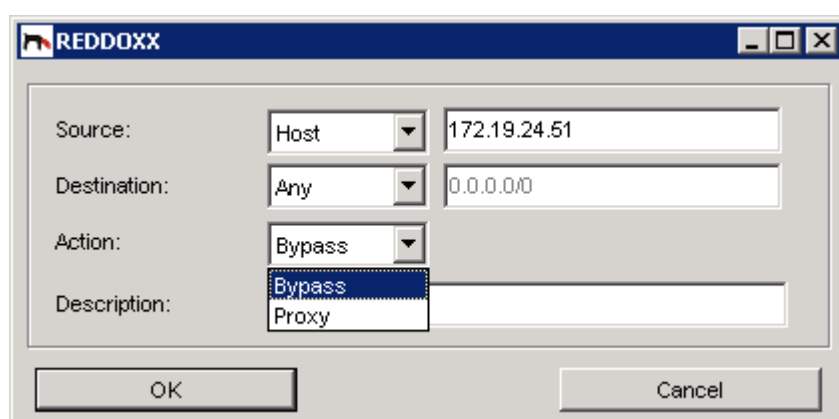


Image: Ports of the REDDOXX Basic appliance

### 1.2.3 Bridge policies

In the appliance configuration you can find the item *bridge policies*. Here you can define the policies that exclude certain members (mail clients) or internet mail servers from proxy mode. This means that the internet traffic for these members is being processed unconsidered and unaltered.



Source: is a client in the internal network, all networks or a certain network

Target: is the provider whose IP address has to be entered here, all networks or a

certain network

**Action:** *Bypass* – e-mails are not retrieved from the provider by the REDDOXX appliance but by the client.

*Proxy* – e-mails are retrieved by the REDDOXX appliance first, then by the client

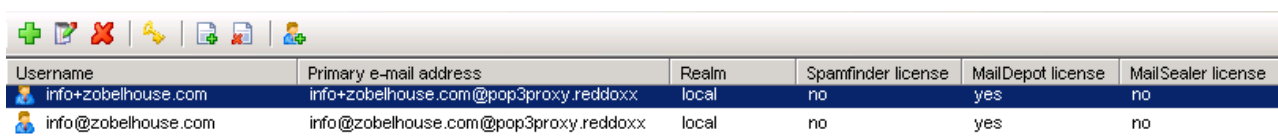
Thanks to the policies you have the opportunity to combine various rules. These rules are processed top down. As soon as a rule applies, it will be used. Further subsequent rules will not be regarded anymore.

Rules changed will only apply after pressing the *APPLY icon* in the tray icon.

## 2 Managing users

Setting up users and e-mail aliases is done automatically as soon as a client retrieves an e-mail from its provider.

Thereby the e-mail alias receives the pseudo domain *pop3proxy.reddoxx*. Licences will be assigned automatically, depending on whether there are still any available.



Username	Primary e-mail address	Realm	Spamfinder license	MailDepot license	MailSealer license
info+zobelhouse.com	info+zobelhouse.com@pop3proxy.reddoxx	local	no	yes	no
info@zobelhouse.com	info@zobelhouse.com@pop3proxy.reddoxx	local	no	yes	no

### 2.1 Logging on to the user console

For logging on to the USER console please choose the same user name that you defined for the POP3 login.

Please keep in mind that '@' within your user name must be replaced by '+'.  
The password is exactly the same that you use with your provider.

**REDDOXX - Logon**

  
 REDDOXX

Hostname:

Username:

Password:

Realm:

Language:

Save password

## 2.2 Message queues

In *appliance administration* → *message queue* you can see, whether there is a message still in the appliance. In *-incoming messages-POP3* you can find the messages that have been retrieved by the REDDOXX appliance but have not been processed yet. In *-outgoing messages-POP3* you can find the messages that have already been processed by the REDDOXX appliance but have not been retrieved by a client yet.

ID	Received	Sender	Recipient	Size
607C750D5C8	02.02.2008 08:31:21		joerg_...de@pop3proxy.red...	3,26 KB
3F8E7F8F68F	01.02.2008 08:31:01		joerg_...de@pop3proxy.red...	3,17 KB
64B2BE56893	31.01.2008 17:49:56	info@exmail24.net	joerg_...de@pop3proxy.red...	4,77 KB
69A14A9B0B2	31.01.2008 11:27:35	newsletter-reply@...de	proes...ve.de@pop3proxy.red...	10,05 KB
8C4217682EB	30.01.2008 08:32:49		pro...de@pop3proxy.red...	3,68 KB
4386BF61FD2	30.01.2008 08:32:29		irf...de@pop3proxy.red...	4,32 KB
3EC31793F22	30.01.2008 06:58:14	info@v...de	irf...de@pop3proxy.red...	4,77 KB
23A66F9B3BE	29.01.2008 22:26:14	nadine.duscha@st...de	irf...de@pop3proxy.red...	18,49 KB
7357A7E77C5	29.01.2008 22:08:13	@...de	irf...de@pop3proxy.red...	14,61 KB
498D33E0507	29.01.2008 19:57:13	@...de	irf...de@pop3proxy.red...	2,45 KB
1E74BFFA41A	29.01.2008 19:24:13	@...nl	irf...de@pop3proxy.red...	1,92 KB
7F2F2734ED9	29.01.2008 18:13:14	@...de	irf...de@pop3proxy.red...	14,66 KB
7C45E317B1A	29.01.2008 13:27:46	@...de	keine.antwortadresse@...@pop3...	5,04 KB
6003CFBFBDC	29.01.2008 13:27:46	keine.antwortadresse@...de	keine.antwortadresse@...@pop3...	35,86 KB
16343C3CED5	29.01.2008 13:24:13	@...de	irf...@pop3proxy.red...	31,49 KB
4CBF7E15E8D	29.01.2008 10:24:13	@...nl	irf...@pop3proxy.red...	18,21 KB
4632B3E463E	29.01.2008 10:20:13	@...de	irf...@pop3proxy.red...	1,53 KB